

☺WEB/SMS based Help Line for Citizen for Search in Voter List☺

REIL has introduced an Integrated solution for online preparation of ward wise voter list for panchayat raj institutions i.e. Grampanchayat and ward part wise voter list for Urban Local Body i.e. Municipal Corporation, Municipal Council, Nagar Palika, search of names in the voter list by using their EPIC ID number or citizen personal detail, candidate nomination, rejection, voter turnout reports, result declaration and various MIS information related to electoral roll and election.

The Integrated Solution included the web-application for voter list preparation and official website which can be hosted on data centre.

State Level, District Level, SDM/ERO office level user credentials are provided.

The application provides a simple use-friendly interface to input/imports the ward details in the prevailing format.

After the input/import the detail the draft voter list can be prepared online and after feeding claims & objections online, the final voter list can be prepared online.

The online portal has a complete dashboard for monitoring of progress of preparation of Draft/Final voter list for PRI Gram Panchayat Wise, Panchayat Samiti wise, District wise and State Wise and in case ULB, it is Urban local body ward wise, district wise and state wise.

A pdf download utility is developed for online downloading of Draft Voter List, Supplementary Voter List, and Final Voter List in both forms – with photo and without photo. The feature is available for downloading of all ward voter list of Panchayat samiti / Urban Local body on single click.

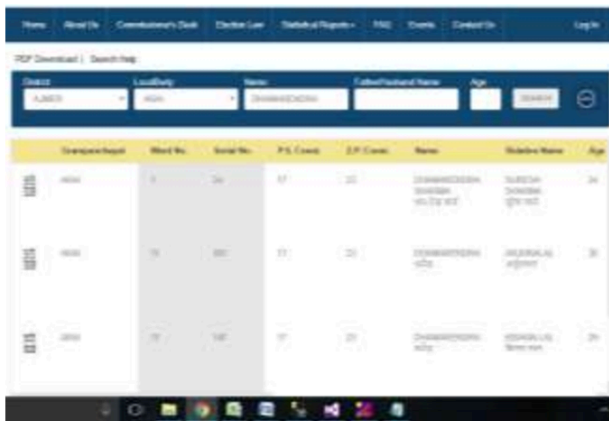
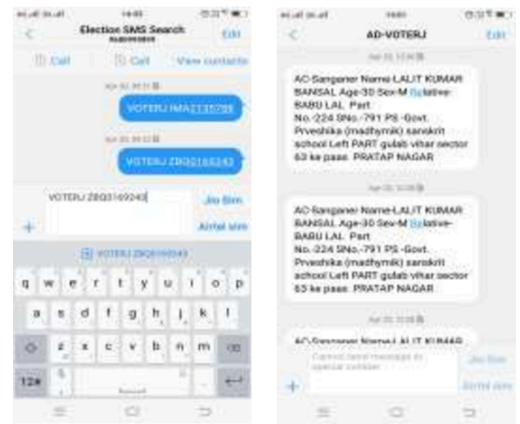
The application is developed on the .NET platform, and SQL Server database platform. The application supports Unicode, for Hindi, which eliminates the need to download fonts and allows easy viewing (of the standard layouts and prompt strings) across browsers, however the data-content viewing could be constrained by the font used by the respective state election departments.

## WEB/SMS based Help Line for Citizen for Search in Voter List

The SMS based query SMS enables the voter to obtain the details of his entry in the Electoral list through an SMS on his mobile phone.

The voter is required to write the voter EPIC ID number in the *write message* space with predefined prefix, and send the SMS to a pre-defined mobile number.

The application comprises of computer systems connected in a network, to receive the messages; search the database; and send the reply message containing the voters detail like name, ward number, PRI/ULB Name, Age, Gender, relative name, polling booth number and address etc.



The official website of State Election Commission has feature to search the voters in draft/supplement/final electoral roll. The voter can be search in three ways:

- EPIC Number: Citizen has to enter his EPIC Number and district.
- Personal Detail: Citizens has to enter his name, age, relative name, age etc.
- View all Family Detail: After viewing citizen detail, citizen can view all voters on same house no.
- Search in PDF file: The voter list without photo pdf file is hosted on official web site and citizen can view/download the pdf file according to gram Panchayat/ULB ward number.

## Salient Features

The Integrated Solution has following salient features:

- Software access user credential for Panchayat Samiti, Urban Local Body, District Office, State Level Office
- Separate work progress monitoring dashboard for Panchayat Samiti, Urban Local Body, District Office, State Level Office.
- Gram Panchayat ward creation, ward detail like gram panchayat name, tahsil, district, ward area description, ward map updation facility.
- Ward wise/ Ward part wise polling booth for configuration for gram panchayat/Urban Local body.
- Section detail addition/updation
- ECI Assembly constituency's voters versus gram panchayat ward area mapping configuration.
- ECI Assembly constituency's voters versus Urban Local Body ward part area mapping configuration.
- Viewing remaining voters in any assembly constituency part after mapping.
- Viewing Draft voter list.
- Publication of Draft Voter List & uploading on official website.
- Online updation of claim & objections on draft voter list.
- Publication of Final Voter List & uploading on official website.
- Gram Panchayat/ ULB wise online monitoring for electoral roll preparation.
- Electoral Roll Statistics like ward/gram panchaya/panchayat samiti/zila parishad/ULB/district/state wise total male, female and others voters, female voters.
- Polling Station wise total male, female voters.
- Age cohort report etc.
- MIS like Gram Panchayat wise total ward, panchayat samiti wise total constituencies, Zila Parishad wise total constituencies etc.

विशेष कार्यवाही, 2019			
नगरपालिका / नगरपालिका / नगरपालिका का नाम : कैलाल			
विधानसभा क्षेत्र का नाम व संख्या : 103-कैलाल			
वार्ड संख्या : 1		वार्ड संख्या : 1	
सं.	नाम	सं.	नाम
1	PLB9187721	2	RU12100153189
3	UG0573295	4	UG0573295
5	UG0573295	6	UG0573295
7	UG0573295	8	UG0573295
9	UG0573295	10	UG0573295
11	UG0573295	12	UG0573295
13	UG0573295	14	UG0573295
15	UG0573295	16	UG0573295
17	UG0573295	18	UG0573295
19	UG0573295	20	UG0573295
21	UG0573295	22	UG0573295
23	UG0573295	24	UG0573295
25	UG0573295	26	UG0573295
27	UG0573295	28	UG0573295
29	UG0573295	30	UG0573295
31	UG0573295	32	UG0573295
33	UG0573295	34	UG0573295
35	UG0573295	36	UG0573295
37	UG0573295	38	UG0573295
39	UG0573295	40	UG0573295
41	UG0573295	42	UG0573295
43	UG0573295	44	UG0573295
45	UG0573295	46	UG0573295
47	UG0573295	48	UG0573295
49	UG0573295	50	UG0573295
51	UG0573295	52	UG0573295
53	UG0573295	54	UG0573295
55	UG0573295	56	UG0573295
57	UG0573295	58	UG0573295
59	UG0573295	60	UG0573295
61	UG0573295	62	UG0573295
63	UG0573295	64	UG0573295
65	UG0573295	66	UG0573295
67	UG0573295	68	UG0573295
69	UG0573295	70	UG0573295
71	UG0573295	72	UG0573295
73	UG0573295	74	UG0573295
75	UG0573295	76	UG0573295
77	UG0573295	78	UG0573295
79	UG0573295	80	UG0573295
81	UG0573295	82	UG0573295
83	UG0573295	84	UG0573295
85	UG0573295	86	UG0573295
87	UG0573295	88	UG0573295
89	UG0573295	90	UG0573295
91	UG0573295	92	UG0573295
93	UG0573295	94	UG0573295
95	UG0573295	96	UG0573295
97	UG0573295	98	UG0573295
99	UG0573295	100	UG0573295



## Election Statistical Information System

The online integrated solution has following features:

- User credential for Zila Parishad, Panchayat Samiti and Urban Local Body.
- Ward category i.e. SC/ST/OBC/Gen etc. configuration.
- Zila Parishad Chairman/Dy.Chairman, Panchayat Samiti Pradhan/Up-Pradhan category configuration.
- Candidate Nomination receipt at returning officer online data entry.
- Publish candidate votes, NOTA, Winner & Runner.
- Polling booth with political party wise votes data entry.
- Poll Progress online data entry
- Gram Panchayat panch and sarpanch, Panchayat samiti member, pradhan, up-pradhan & Zila Parishad member, Chairman, Dy. Chairman online data entry.
- Online Observer report data entry.
- Online Law and Order report data entry etc.

The screenshot displays the 'Nomination' section of the system. It includes a 'Candidate Details' form with fields for Name, Date, and various identification numbers. Below this is a 'Progress Bar' showing the status of the nomination process. The interface is designed for online data entry and monitoring.

This screenshot shows the 'Day to Day Summary Of Received Nominations At PS/ZP/ULB' section. It features a table with columns for S.No., Name of Candidate, P.S. Name, Total Candidates/Boards, and various counts. The table is filtered by 'PS/ZP/ULB' and 'Date'. The interface is designed for online data entry and monitoring.

Publish of Election Related Information on official website of State Election Commission for Panchayat Samiti/Zila Parishad and Urban Local Body :

- Day to day Nomination Statistics
- Nomination Summary
- Party Wise & Sex Wise Contesting Candidates
- Polling percentage
- Booth Wise poll percentage and voter turnout
- Polling percentage in wards reserved for Women and Scheduled Cast
- Polling booth report as per voters
- Winning Candidate Pledge
- Candidate Wise Votes
- Winners & Runner-ups
- Result seats - Party Wise
- Party Wise Vote Share
- Result Panch/sarpanch
- Result Pradhan/Up-Pradhan
- Result of Chairperson/Deputy Chairperson
- Result of Mayor/Dy.Mayor

## Help Desk for Support Service during Election Period

The help desk enables a user to call on a given help-line telephone; provide the query related to electoral roll generation; and obtain the details in response.

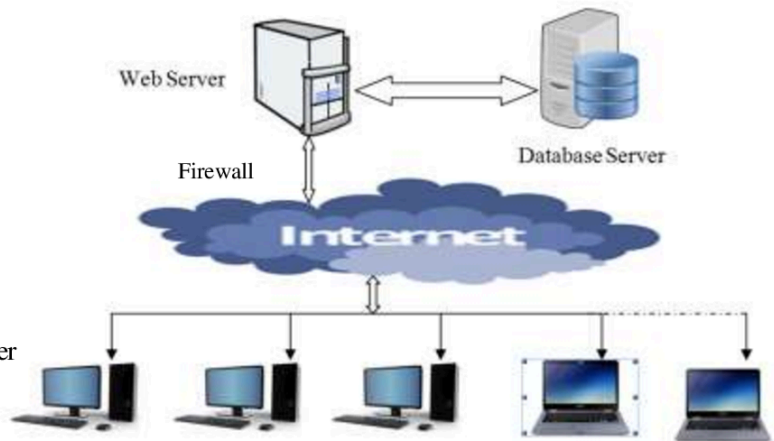
It comprises of help desk stations and a database server. The stations are connected to the server. The stations are also equipped with phone-line termination devices including hands-free calling devices.

The help desk is routed to the respective work-stations where the query is received and the result communicated to the caller.



## Pre-requisite for Integrated web based Solution

- .Net framework 4.5 or higher
- **Web Server**  
Intel Xeon Processor,  
RAM 128 GB or higher  
Hard Disk: 1 TB or higher  
IIS server version 10.0 or higher
- **Database Server:**  
Intel Xeon Processor,  
RAM 256 GB or higher  
Hard Disk: 2 TB or higher  
Microsoft SQL server 2014 or higher
- **Reporting Tool :**  
SAP Crystal report



## About REIL

The Rajasthan Electronics & Instruments Limited (REIL) is a **Public Sector Enterprise** under the **Department of Heavy Industries, Ministry of Heavy Industries and Public Enterprises, Government of India**. The Company is jointly promoted by Government of India and Government of Rajasthan (through RIICO, Jaipur). REIL is a profit-making dividend-paying Company since its inception in the year 1981.

The Company has technical know-how and substantial in-house infrastructure for development of software on contemporary platforms and carrying Job works involving large volume databases including bilingual data and images. REIL has the experience and know-how to develop application software for all business function on various platforms and architecture. The IT division of the Company has undertaken many development and turnkey assignments in the past for its customer.

REIL entered the business segment of voter identity card, in 1994, with state-of-art technology i.e. digital imaging and data processing technology, for large scale production of EPIC cards. It also produced over 60 Lac cards for the state of Gujarat.

The Company is providing the services to Election Department, Rajasthan as a State Level Agency since 2008 for Electoral Roll Management Software and also provides the services of call centre, state level communication centre during the State Assembly Election. REIL executed & delivered the desired services up to the satisfaction of Election Department as per scope and the task assigned by Election Department.

The Company is also appointed as State Level Agency by State Election Commission, Rajasthan in Feb 2019 for providing the services for online Election Related Statistical Information System, online preparation of ward wise electoral roll for Panchayat raj Institutions and Ward Part wise electoral roll for Urban Local Body from Assembly Constituencies Databases.

In the Information Technology business it has developed PC based applications for Dairy sector including PC-based Milk Collection Station, PC-based (Milk Co-operative) Society Accounts Management System, and (Milk Plant) Raw Milk Reception Dock Automation Systems, Web based Water Pumping Management System, Integrated Online Milk Procurement System (MilkNET), Integrated Online Medicine Management Software , Web based Solar PV monitoring system for Atal Sewa Kendra, Online Registration of Students for Secondary/Sr. Secondary for State Open School, Application Software Modules like Human resource, Finance Accounting, Inventory, Loan Management etc.

*For further information contact:*

IT Division, REIL House, Shipra Path, Mansarovar, Jaipur – 302020

Tel: +91-141-2888400, E-mail: reilit@reiljp.com



**RAJASTHAN ELECTRONICS & INSTRUMENTS LIMITED**

(An ISO 9001:2015 & 14001:2015 “Mini Ratna” Central Public Sector Enterprise)

2, Kanakpura Industrial Area, Sirsi Road, Jaipur-302 034 (Raj.) India

EPABX Tel: +91-141-2470062, 2470363 Fax: +91-141-2470139

E-mail: reiljp@reiljp.com

Website: www.reiljp.com

