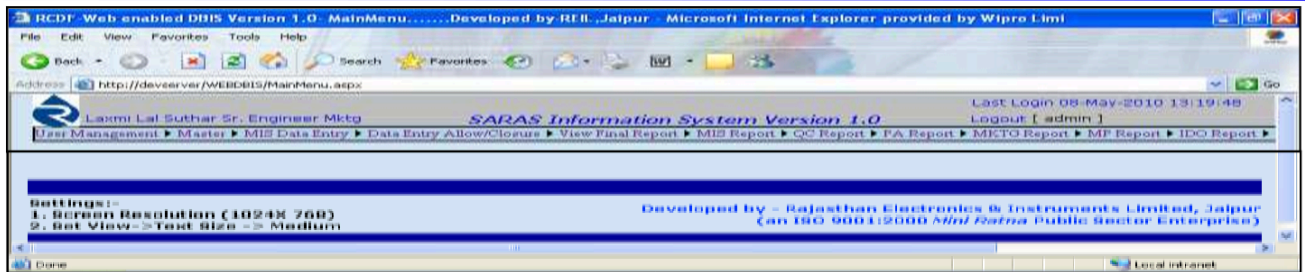


## Web enabled Dairy Business Information System (WebDBIS)

### Description



REIL has been working on a low cost software solution to address various requirements of the Dairy sector and the SME sector.

In line of above the [Web enabled Dairy Business Information System \(WebDBIS\)](#) has been designed and developed in-house in an efficient, fast, accurate and low cost web based application.

The applications is used for addressing the management needs for collecting, managing, processing and generating varieties of information reports on daily, weekly, fortnightly, monthly and on yearly basis from its units like Milk Unions, Cattel Feed Plant, Fodder seed farm etc. Which help the management to take decision in efficient manner.

The application proposed as web enabled dairy business information system takes care for the following departments:

- Management Information System
- Quality Assurance
- Marketing
- Personnel and Administration
- Finance
- Monitoring & Planning
- Institutional development Officer
- Farmer Organisation and Animal Husbandary
- Dairy Plant Monitoring & Project

These departments on continual basis monitor the performance of its units. With this application in place, units has to input their data online through WebDBMIS applicaion.

The implementation shall entail a preliminary customer requirement study; product customization; data preparation; implementation and training.

The application architecture is a three-tier architecture as follows:

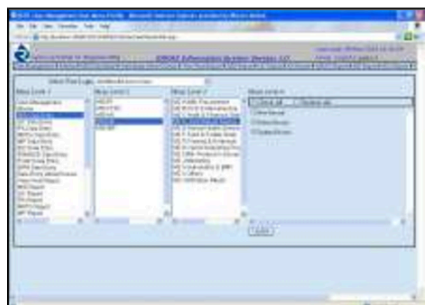
- RDBMS Server
- Application Server
- Client Desktop

The solution has been developed around the Oracle platform, on the Windows Server operating system -- as a database server -- and the applications residing on the application server. The clients shall be able to access and operate the application through the browser such as Internet Explorer.

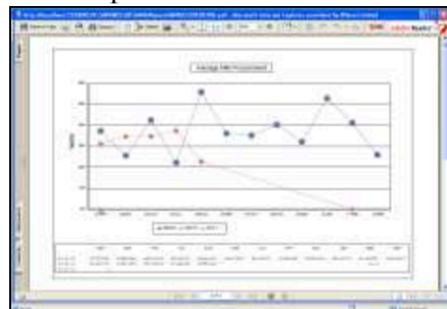
The application software is based on contemporary platform; requires minimal software on the client desktop; provides a central depository of the application software for ease in maintenance and change implementation; and a robust database at the back-end.

## Features

- Flexible User Management
- Browser based application
- On line data entry
- Automatic Output Reports Generation
- Data entry status control panel
- Full Administrator control
- Data security
- Unit wise data isolation
- Comparison statement with past years data
- Instant Information Reports
- Graph based reports and Charts
- Reports in PDF format
- Data import feature



User Management



Graph Based Report

## Advantage

- Ease of use – The WebDBIS System is very user friendly and with the right amount of training, it is easy for the users to use the system.
- Data management, Compilation, Correctness, accuracy and timely report generation helps to provide greater control over the units and accordingly act or take management decisions for better prospects and performances of business.
- Easy enterprise wide information sharing – Once the information is entered into the single database, everyone in the organization has access to the information and sees the same computer screen.

## System Specification

- The Front end of the application is developed in ASP.NET.
- The back end is in Oracle 10g database.
- Hardware requirement
  - Application Server
  - Database Server
  - Application nodes

**Note: A pre-implementation study is a pre-requisite for such projects, to identify the system requirements and user requirements. The customization can be done as per the user requirements.**

*For further information contact:*

IT Division, REIL House, Shipra Path, Mansarovar, Jaipur – 302020  
Tel: +91-141-2888400, E-mail: reilit@reiljp.com



**RAJASTHAN ELECTRONICS & INSTRUMENTS LIMITED**  
(An ISO 9001:2015 & 14001:2015 "Mini Ratna" Central Public Sector Enterprise)  
2, Kanakpura Industrial Area, Sirsi Road, Jaipur-302 034 (Raj.) India  
EPABX Tel: +91-141-2470062, 2470363 Fax: +91-141-2470139  
E-mail: reiljp@reiljp.com Website: www.reiljp.com

